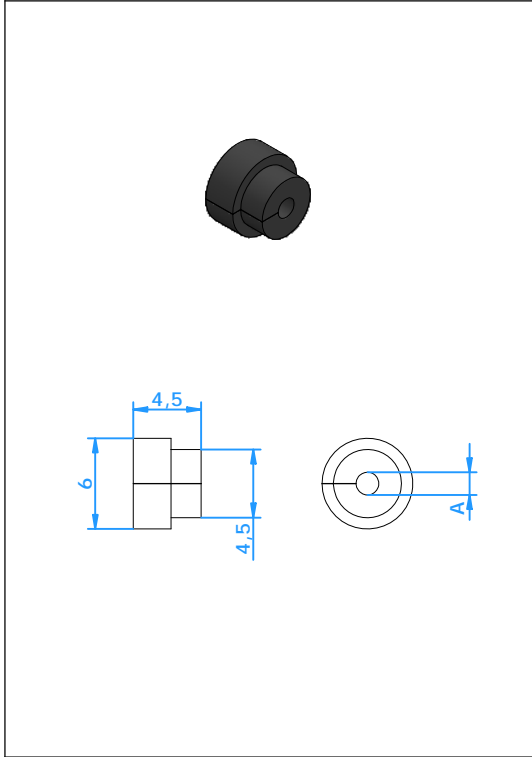


Accessories

Miniature Connector Grommet



Application

Grommet can be fitted in the entrance hole of the connector to prevent moisture and dirt from entering the connector. Has limited strain relief capabilities.

Construction

Silicone ring, slit for easy mounting over wire. Will compress on the wire when the cover is fitted.

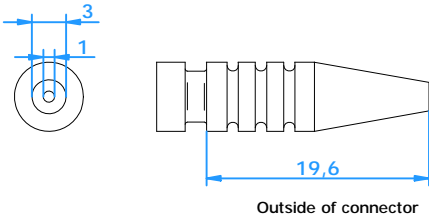
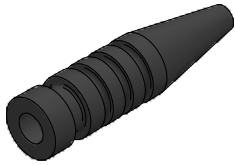
Temperature rating

- 200 °C Max.

Part Nr.	A
20.031-1	3,00 mm
20.031-2	0,50 mm
20.031-3	1,50 mm

Accessories

Miniature Connector Bending Protection



Application

Bending protection for thermocouples and wire being used with miniature connectors. Prevents mechanical damage of wires at entrance point of the connector.

Construction

- Silicon rubber insert, tapered entrance hole ensures proper sealing on cable

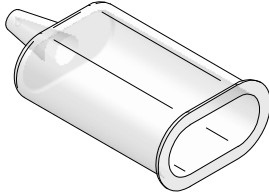
Temperature Rating

- 200 °C

Part Nr. 20.293

Accessories

Miniature Connector Protection Boot



Application

The two flexible silicone rubber boots will cover the connector set snugly and prevent moisture, water and dirt entering the connector.

Temperature Rating

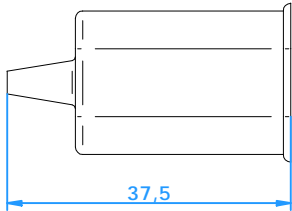
- 200 °C / 300 °C

Construction

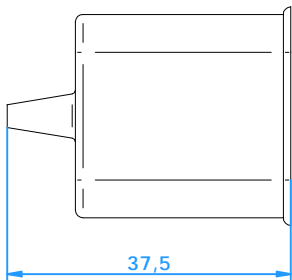
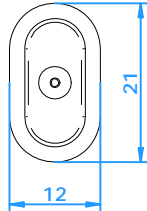
- Silicone cover with retention ring prevent disconnection due to vibration.
- Tapered entrance hole to ensure proper sealing on most cable diameters.

Part Nr.	20.030-1	Two pin connector 200 °C (Transparent)
	20.030-2	Three pin connector 200 °C (Transparent)
	20.029	Two pin connector 300 °C (Black)

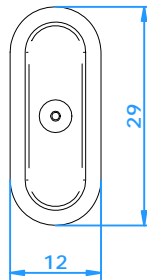
Note: for one set order 2 pcs



Two Pin

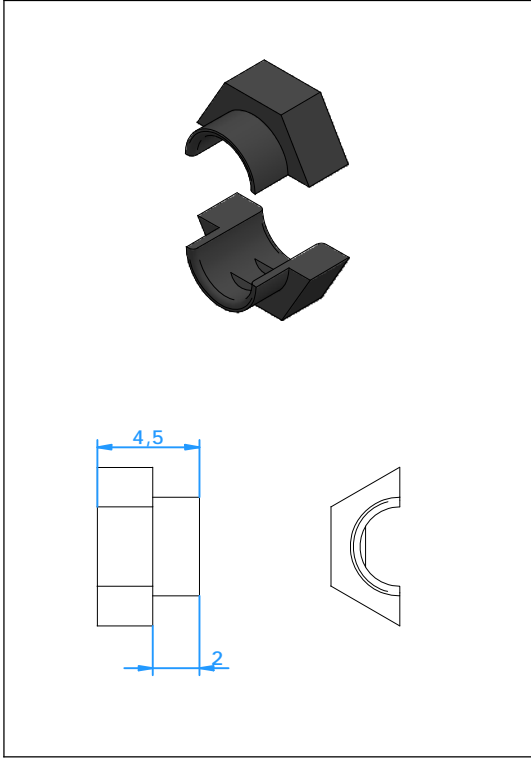


Three Pin



Accessories

Miniature Connector Wire Insert



Application

A set wire inserts fitted in the entrance hole of the connector will provide a very good strain relief without any protruding parts from the connector.

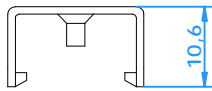
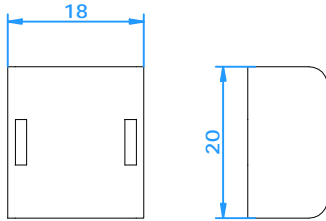
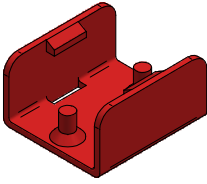
Construction

Thermoplastic material with a round or oval hole to fit around a specific wire.

Part Nr.	Round/Oval	Wire
20.075-1	Round	1,5 mm
20.075-5	Round	3,5 mm
20.075-24	Oval	2,0 x 1,5 mm

Accessories

Miniature Connector Locking Clip



Application

Miniature connectors do not have a retention groove. In order to prevent accidental disconnection a locking plate can be used.

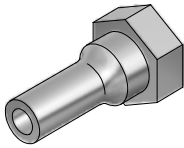
Construction

- Glass filled thermoplastic with the same temperature rating as the connector body (200°C)
- Red color indicates clearly that circuits are protected
- Can be placed and removed without any tools.

Part Nr. 20.096

Accessories

Miniature Connector Crimp-insert



Application

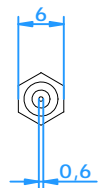
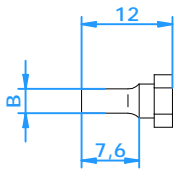
Designed for soldering or crimping on mineral insulated cable or crimping on insulated wire.

Construction

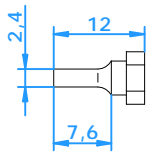
Brass machined, nickel plated insert with 0,1 mm tolerance on the cable OD



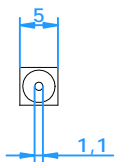
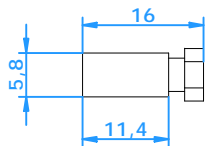
20.024-x



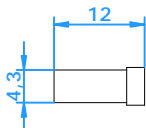
20.225



20.051



20.279-2



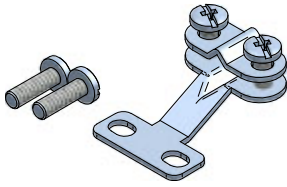
Part Nr.	A	B
20.024-1	1,10 mm	2,40 mm
20.024-2	1,60 mm	2,40 mm
20.024-3	1,70 mm	2,40 mm
20.024-4	2,10 mm	3,20 mm
20.024-5	2,40 mm	3,20 mm
20.024-6	3,10 mm	4,50 mm
20.024-7	3,30 mm	4,50 mm
20.024-8		4,50 mm
20.024-9	3,90 mm	4,50 mm
20.024-10	2,80 mm	4,50 mm
20.024-11	2,70 mm	4,50 mm
20.024-12	1,90 mm	3,20 mm
20.024-13	3,50 mm	4,50 mm
20.024-14	0,90 mm	2,40 mm
20.024-15	3,80 mm	4,50 mm

Part Nr.	A	B
20.225	0,6 mm	2,4 mm
20.051	5,0 mm	5,8 mm
20.279-2	1,1 mm	4,3 mm

Note: 20.279-2 is for mini ceramic connectors only

Accessories

Miniature Connector Wire Clamp Bracket



Application

Wire clamp bracket will provide optimum strain relief.

Construction allows a large difference in maximum and minimum wire diameter.

Construction

All stainless steel, incl stainless steel screws

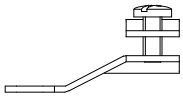
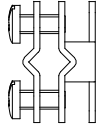
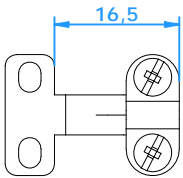
Part Nr.

20.050-1 miniature connector
fits on all connectors CMP, CMJ, CMPH, CMJH, CMPT and CMJT

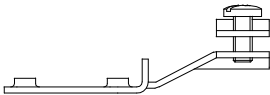
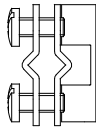
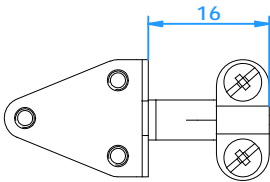
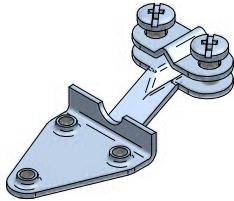
20.050-2 miniature connector ceramic
fits on all connectors CMPC, CMJC

20.050-3 miniature connector duplex
fits on all connectors CMPD, CMJD

20.380 miniature connector ultra high temp
fits on all connectors CMPU, CMJU



20.050-x



20.380